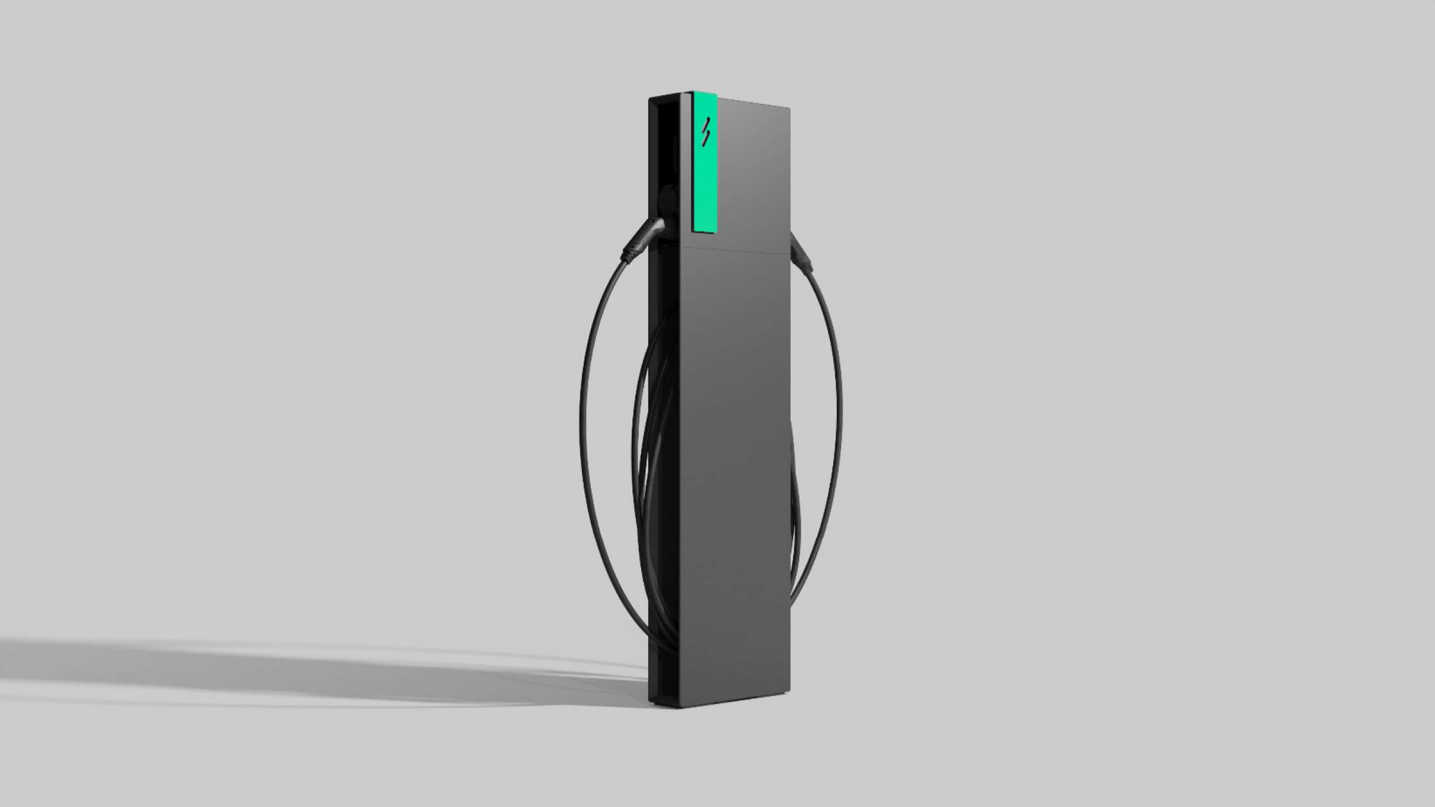


BLITZ

BLITZ



Electrical	
Input voltage	3 x 400V + N or 1 x 230 V AC or 3 x 230 V AC
Grid frequency	50 Hz
Protection	Integrated 6 mA DC residual current protection Overcurrent protection not included
Number of outputs	1 or 2
Output power per connector	3 x 400V, up to 22kW (32A) or 1 x 230V, up to 7,4 kW (32A) or 3 x 230V, up to 14,8kW (32A)
Charge mode	Mode 3 per IEC 61851
Energy meter	MID class B certified
Environmental	
Operational temperature	-20 °C to +60 °C
Storage temperature	-20 °C to +80 °C
Altitude	Up to 2000 m above mean sea level
Relative humidity	0% - 95% (non-condensing)
Mechanical	
Dimensions	Charger box: 400 mm x 400 mm x 130 mm Tower: TBA
Weight	Charger box: TBA Tower: TBA
Ingress protection	IP54
Mechanical impact protection	IK10
Material casing	Casing: aluminium Front panel: Plexiglas
Connector or socket	Type 2
Mounting	Wall-mount or tower
Charging cable length	5 meter or 8 meter (optional)
Certificates and standards	
Product certification	CE, RoHS
EV charging standards	IEC 61851-1, IEC 61851-21-2
Communication and interfacing	
Status indicator	multicolour LED
Activation methods	Plug & charge, RFID
Communication interfaces	Ethernet, 4G
Communication protocol	OCPP 1.6 JSON

	HOME			STANDAARD		
	BPS Single one home	BPS Dual one home	BPS Dual two home	BPS Single one	BPS Dual one	BPS Dual two
Aantal Input (elektriciteit)	1	1	2	1	1	2
Beveiliging						
DC Lekdetectie	✓	✓	✓	✓	✓	✓
AC Lekdetectie (type-A)	X	✓	X	X	✓	X
Overspanningsbeveiliging	X	✓	X	X	✓	X
Energiemeter	X	X	X	✓	✓	✓
Output						
Aantal output	1	2	2	1	2	2
Kabel / stekker	Beide	Beide	Beide	Beide	Beide	Beide
230v stekker (optioneel)	✓	X	X	✓	X	X
Gebruik						
Activatie	Plug & Charge, OCPP, Modbus	Plug & Charge, OCPP, Modbus	Plug & Charge, OCPP, Modbus	Plug & Charge, RFID Whitelist, OCPP, Modbus	Plug & Charge, RFID Whitelist, OCPP, Modbus	Plug & Charge, RFID Whitelist, OCPP, Modbus
Connecteren	Ethernet	Ethernet	Ethernet	Ethernet, 4G, Modbus	Ethernet, 4G, Modbus	Ethernet, 4G, Modbus
OCPP	✓	✓	✓	✓	✓	✓
(Dynamic) Load management	✓	✓	✓	✓	✓	✓
Aantal stations in serie	1	1	64	64	64	64